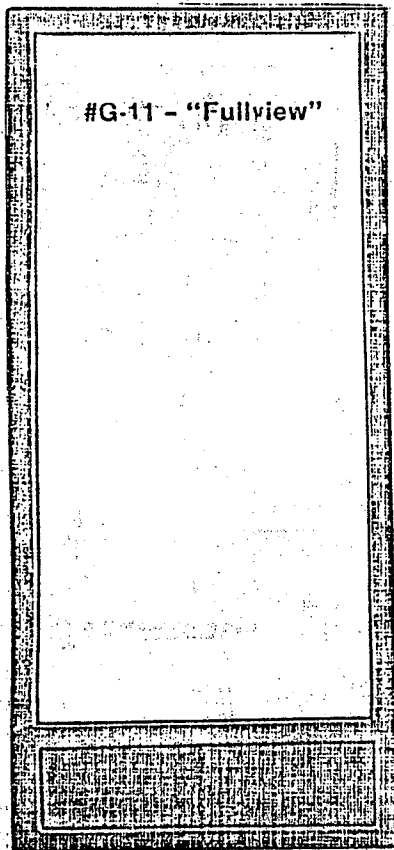


# MOUNTAIN·VIEW

## CONDOMINIUM



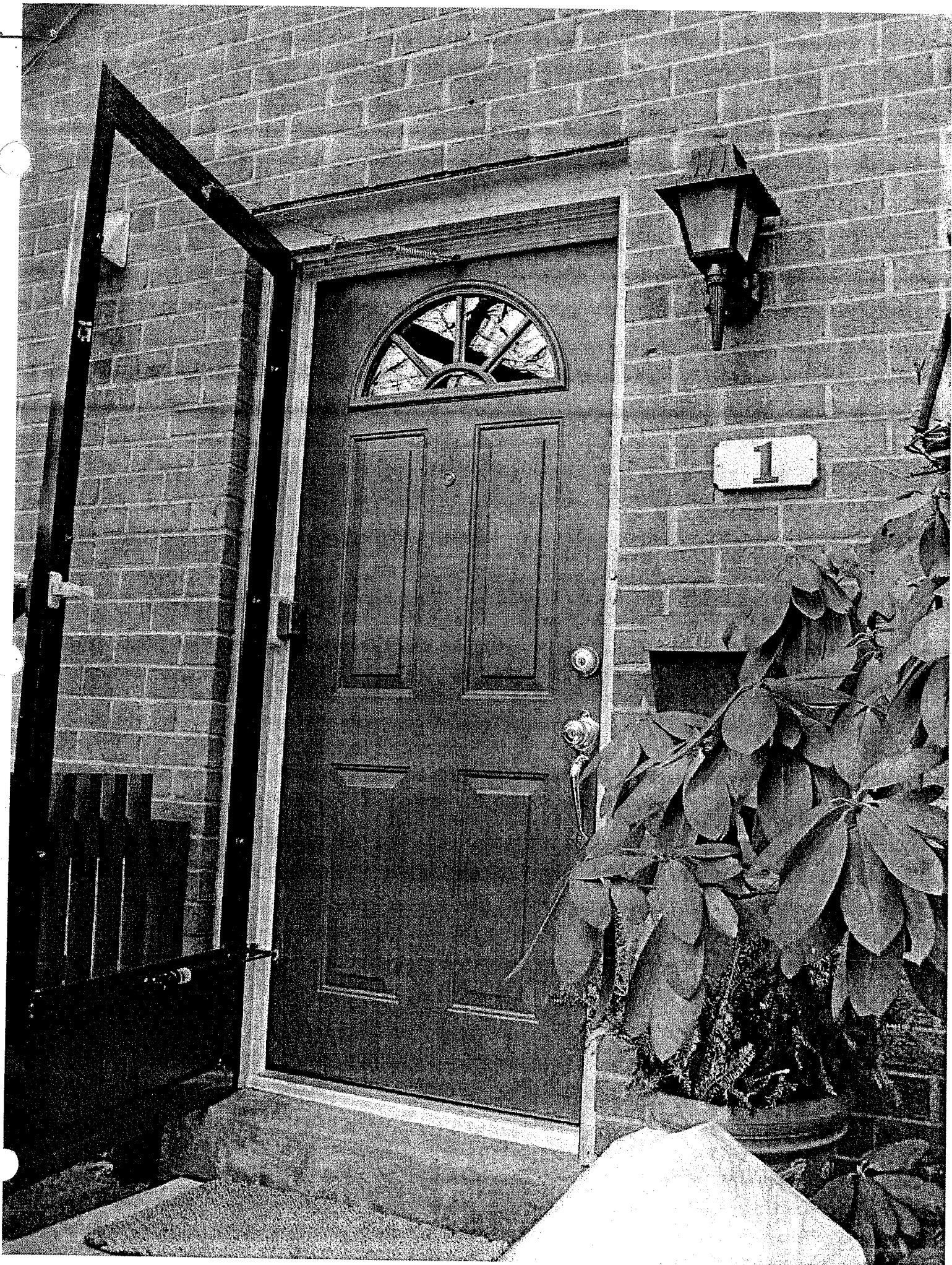
ONLY APPROVED STORM DOOR FOR  
FRONT DOOR

- \* Heavy duty extruded aluminum  
Guage 050
- \* 6063 - alloy content
- \* T5 - Tempered
- \* All aluminum screening
- \* Extruded aluminum piano hinge
- \* Heavy quality, die cast  
aluminum handle and lock set
- \* Weather strip back-up angle,  
adjustable
- \* Tempered glass
- \* Bottom sweep
- \* Guaranteed two years (except  
wind damage)

COLOR: Terracotta - Gill #G-11  
Powder Coated - Marine Glazed

PRICE: \$190.00  
Includes installation and  
storm and screen inserts

BERWYN HARDWARE - Doug Burnett  
644-0275



**Andersen**  
WINDOWS • DOORS

**FOREVER**  
by Andersen

**EMCO**

**ALL SEASONS®**

HOME | GETTING STARTED | PRODUCT LINE | KNOWLEDGE WAREHOUSE | INSTALLATION INSTRUCTIONS | CONTACT

## Andersen HD 3500 Fullview

**Andersen** Design made easy.

Start designing your door

### Decorative

#### Andersen

- ▶ HD 3500 V-Groove
- ▶ HD 3000 V-Groove
- ▶ HD 3500 Brass Thermal
- ▶ HD 3000 Brass

#### Forever by Andersen

- ▶ HD 2500 V-Groove
- ▶ HD 2500 Brass
- ▶ HD UltraCore Brass Oval

### Fullview

#### Andersen

- ▶ HD 3500 Fullview Thermal
- ▶ HD 3500 Fullview
- ▶ HD 3500 Fullview Nickel
- ▶ HD 3000 Fullview
- ▶ HD 3000 Fullview Nickel

#### Forever by Andersen

- ▶ HD 2500 Fullview
- ▶ Guard

#### EMCO

- ▶ HD 200 Fullview
- ▶ HD 150 Fullview

### Ventilating

#### Andersen

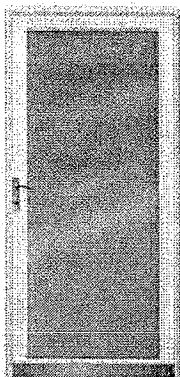
- ▶ HD 3000 TruEase™
- ▶ HD 2500 Self Storing

#### Forever by Andersen

- ▶ HD 2500 Triple-Track
- ▶ Traditional
- ▶ Crossbuck
- ▶ HD UltraCore Colonial Triple-Track
- ▶ HD UltraCore Triple-Track

#### EMCO

- ▶ HD 400 Colonial Triple-Track
- ▶ HD 400 Triple-Track
- ▶ HD 400 Traditional
- ▶ HD 300 Colonial Triple-Track
- ▶ HD 300 Triple-Track
- ▶ HD 200 Traditional
- ▶ HD 200 Crossbuck
- ▶ HD 200 Colonial Triple-Track
- ▶ HD 200 Triple-Track
- ▶ HD 100 Self-Storing
- ▶ HD Screen
- ▶ HD 75 Crossbuck



Click on Door or Color Swatches to Enlarge View

<b>White</b> 30" x 80" 32" x 80" 34" x 80" ▶ 36" x 80"	<b>Almond</b> 32" x 80" ▶ 36" x 80"
<b>Black</b> 32" x 80" 36" x 80"	<b>Green</b> 32" x 80" 36" x 80"
<b>Sandstone</b> 32" x 80" 36" x 80"	<b>Stone Blue</b> 32" x 80" 36" x 80"
<b>Terracotta</b> 32" x 80" 36" x 80"	<b>Wineberry</b> 32" x 80" 36" x 80"



Available sizes and colors. Place your pointer over color swatches to see door change color.

▶ This door is typically stocked in white and almond in the following regions of the U.S.: MA, MW, NA, SW (North) and SE (Virginia).  
[What region do I live in?]

Contact your local Home

### Energy Efficiency

- 1-1/2" thick aluminum frame with foam insulation.
- Double Quad Seal system on bottom, sides and top including overlapping door seal and water-diverting

### Beauty

- Deluxe solid-brass handle set inside and out.
- Brass-finished sweep accents home's beauty.
- Color-matched closers and screw covers blend perfect door.
- Contemporary rounded door edges frame the glass

### Convenience

- Solid-brass perimeter locks hold window or insect screen tightly in place. No tools required!
- Door holds open with the push of a button.
- Reversible hinge lets you match left- or right- side entry door handle. Opens 180° when needed.



### Security

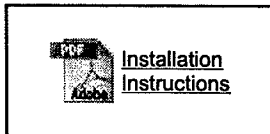
- Key-lock and deadbolt locking system are built into
- Can be keyed to match your Kwikset® (additional price required) or Schlage® (included) entry system.
- Tempered glass provides extra safety.

### Durability

- Patented retainer system helps prevent insect screen pulling out of frame.
- TarnishGuard™ handle stays beautiful with just a touch from a soft cloth. Guaranteed to not crack or tarnish
- Heavy-gauge aluminum construction with reinforced
- Two closers and full-length hinge provide smooth, quiet operation.

▶ HD 75 Self-Storing

Depot to verify doors in stock. Any door not stocked can be special ordered for delivery in only **7-10 days.**



Door Size	Fits Opening Width*	Fits Opening Height
30" x 80"	29-3/4" to 30-3/4"	80" to 80-7/8"
32" x 80"	31-3/4" to 32-3/4"	80" to 80-7/8"
34" x 80"	33-3/4" to 34-3/4"	80" to 80-7/8"
36" x 80"	35-3/4" to 36-3/4"	80" to 80-7/8"

\* For openings up to 1" wider than those listed, order optional Z-Bar Extender kit.



EMCO Enterprises, Inc. is a wholly owned subsidiary of Andersen Corporation.  
© 2003 Andersen Corporation. All rights reserved.

Available

